



6063 Alloy
T6 Temper

 **TÜVRheinland®**
Precisely Right.

MIAMI DADE COUNTY
APPROVED
NOA #20-1021.03

FBC
(Florida Building Code 2020)
✓ TAS 201-94
✓ TAS 202-94
✓ ANSI Z97.1

 **IMPERIA**
GLASS RAILING
SYSTEMS

K1

High Aesthetic Appeal

ALU WIND
Aluminum Extrusions



K1 has been specifically designed to provide great-looking, cost-effective solutions that conform to EU building regulations. NOA #20-1021.03

- Rail height 44"
- Aluminum base shoe 4.72"x1.89" – 157"(4meters) length
- Easily allows you to remove, adjust or replace Glass Panels
- UP TO 771lb loads (350Kg.)
- 1/2" 11/16", 13/16" tempered laminated glass with 0.060" SentryGlas Interlayer

MIAMI DADE COUNTY
APPROVED

NOA #20-1021.03



6063 Alloy
T6 Temper



TÜVRheinland®
Precisely Right.

MIAMI DADE COUNTY
APPROVED

NOA #20-1021.03

FBC
(Florida Building
Code 2020)

✓ TAS 202-94
✓ ANSI Z97.1



IMPERIA
GLASS RAILING
SYSTEMS



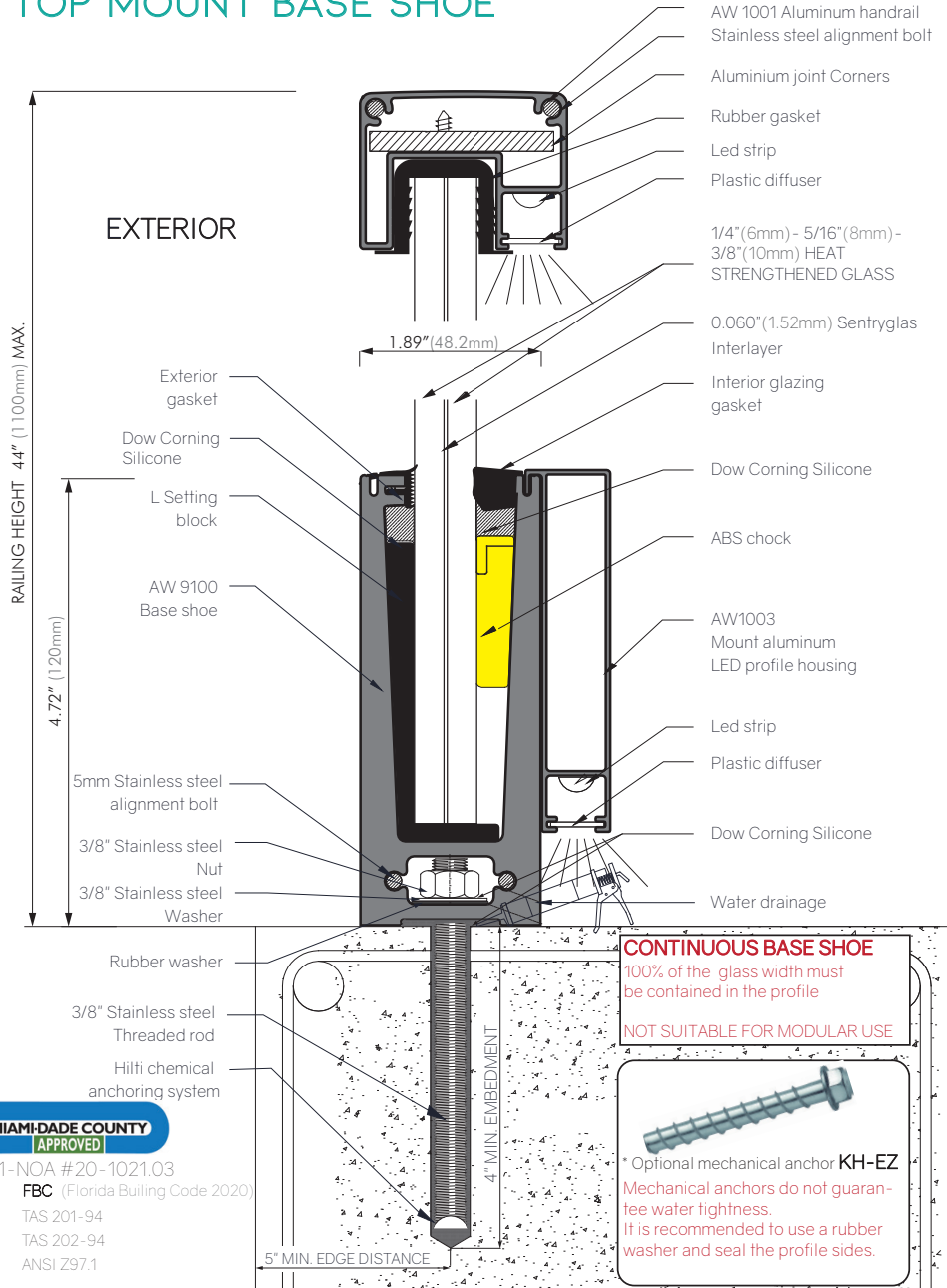
- Continuous stream of light
- No visible cables
- Frosted plastic covers

Your Profile

Handrails



TOP MOUNT BASE SHOE



MIAMI-DADE COUNTY
APPROVED

K1-NOA #20-1021.03

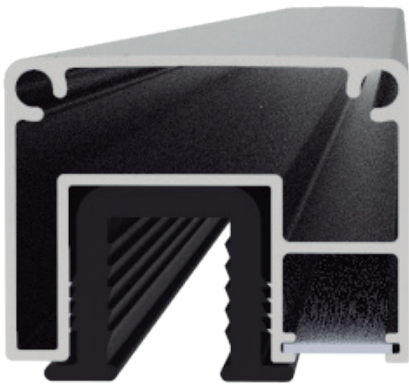
✓ FBC (Florida Building Code 2020)

✓ TAS 201-94

✓ TAS 202-94

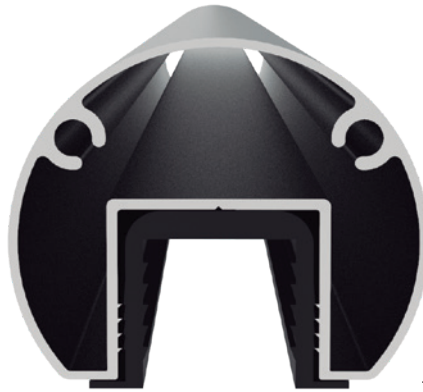
✓ ANSI Z97.1

HANDRAIL SYSTEMS



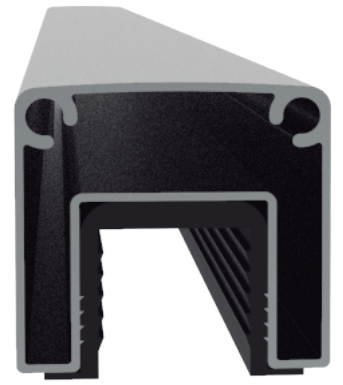
LED

KIT: K7



ROUND

KIT: K9



SQUARE

KIT: K8

OPTIONAL HANDRAIL

*First place the rubber gasket on top of the glass and then press the aluminum profile over it.

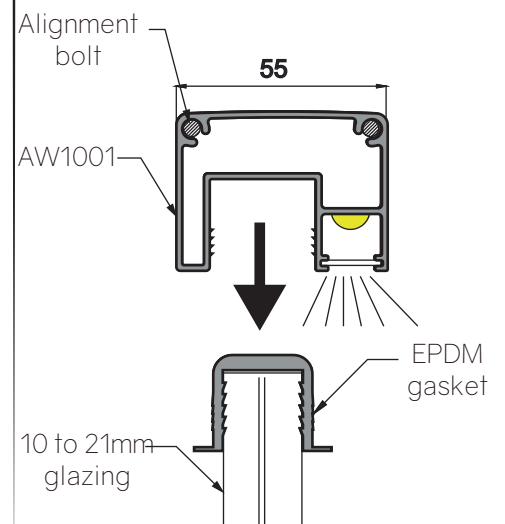
**With 8+8 and 10+10 glazing, place the rubber gasket inside the aluminum profile and then press them over the glass.

ALUMINUM HAND RAIL
(K7/ K8/ K9)

EPDM RUBBER
GASKET



Attention!
A little pressure is needed to push the handrail in its place.



- ✓ MORE SAFETY: glasses 500% stronger and 100 times more rigid than traditional laminates.
- ✓ GREATER VISUAL FIELD: 20% higher than that obtained with conventional guardrail systems.
- ✓ RAPID INSTALLATION: 4 times easier and faster than a traditional railing. Videos and manuals are provided "step by step" of the entire installation process.
- ✓ COMPLETE SYSTEMS: Aluwind provides complete kits with everything necessary for the installation of the railing, and a wide variety of accessories for all its systems.
- ✓ ZERO MAINTENANCE: unalterable materials with the passage of time (aluminum, glass and stainless steel).

HIGH QUALITY PRODUCTS



NOA #20-1021.03

✓ TAS 201-94

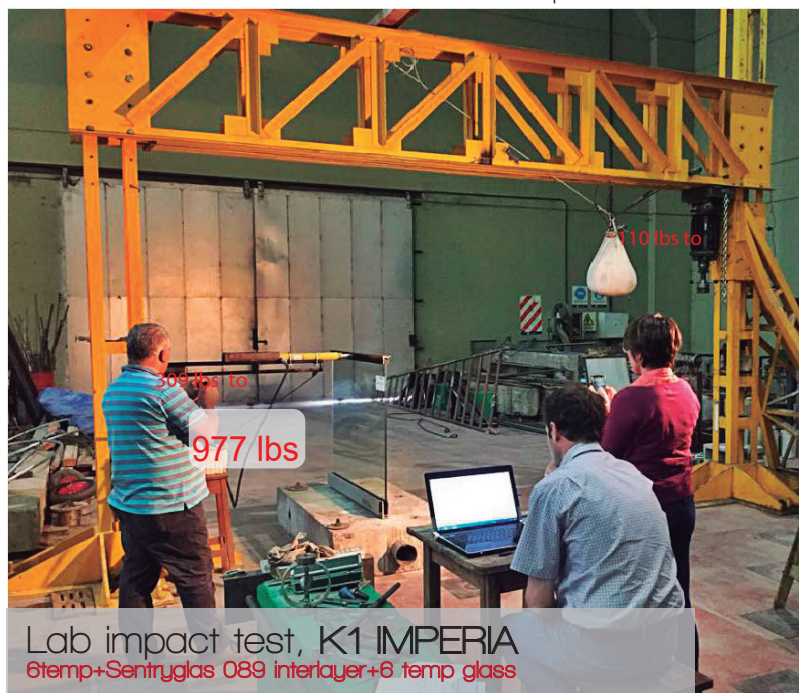
✓ TAS 202-94

✓ ANSI Z97.1



✓ 6063 Alloy

✓ T6 Temper



Lab impact test, K1 IMPERIA
6temp+Sentryglas 089 interlayer+6 temp glass

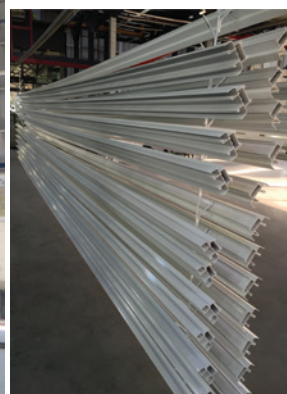


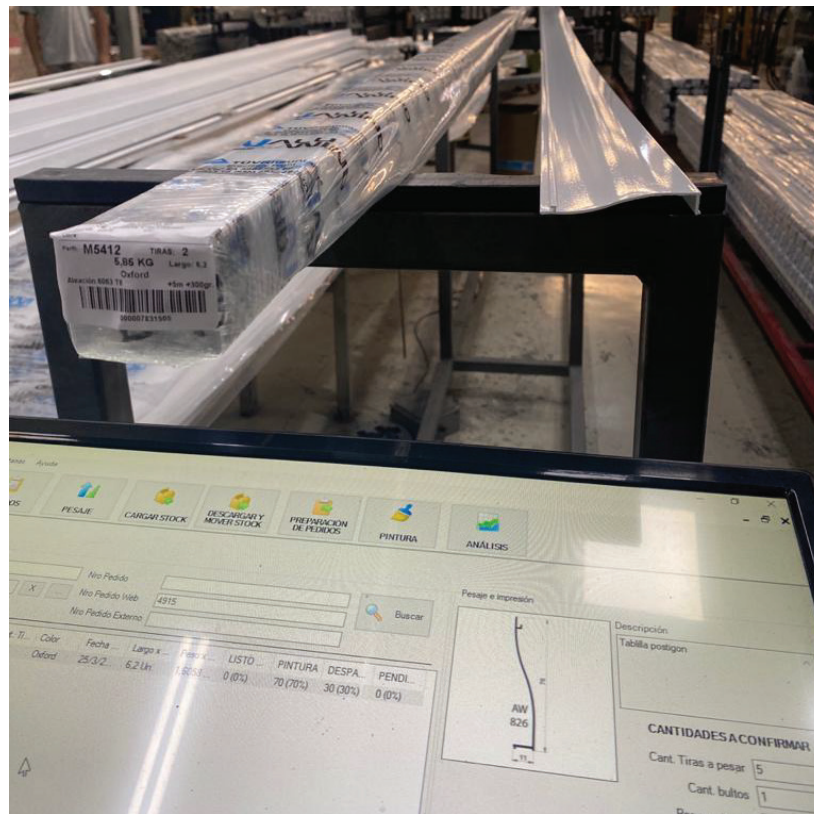


OUR FACTORY



HIGH QUALITY
POWDER COATING SERVICES





IMPERIA



ALUWIND SA
Av. Japón 550 C.P. X5019BGZ
Córdoba, Argentina

MALU
WIND
Aluminio Extruido